

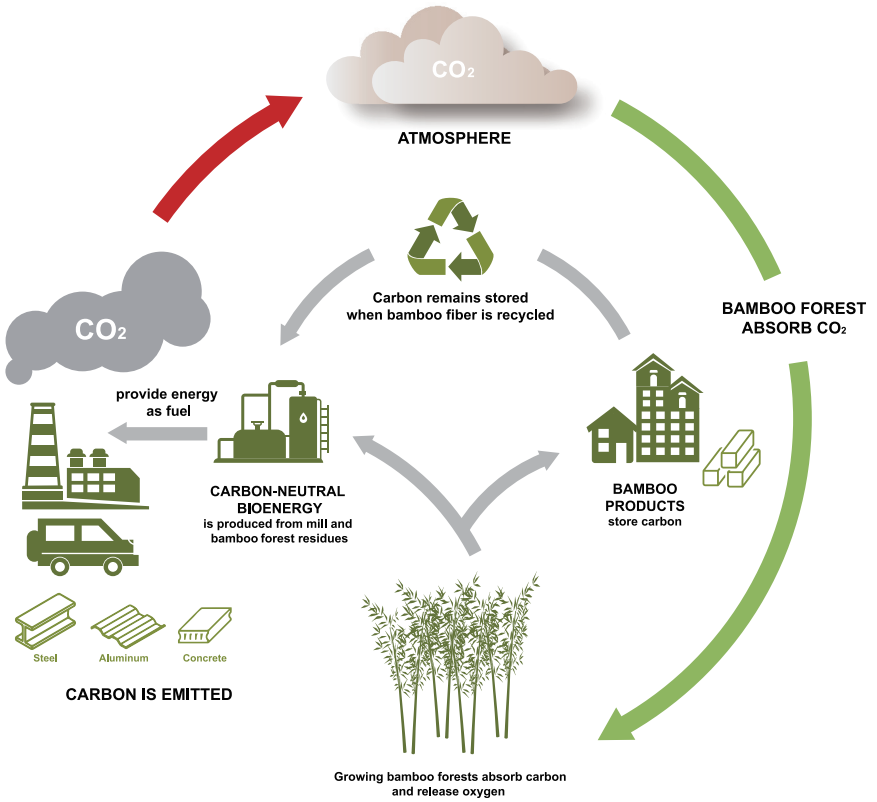


# GREEN · BAMBOO · DASSO

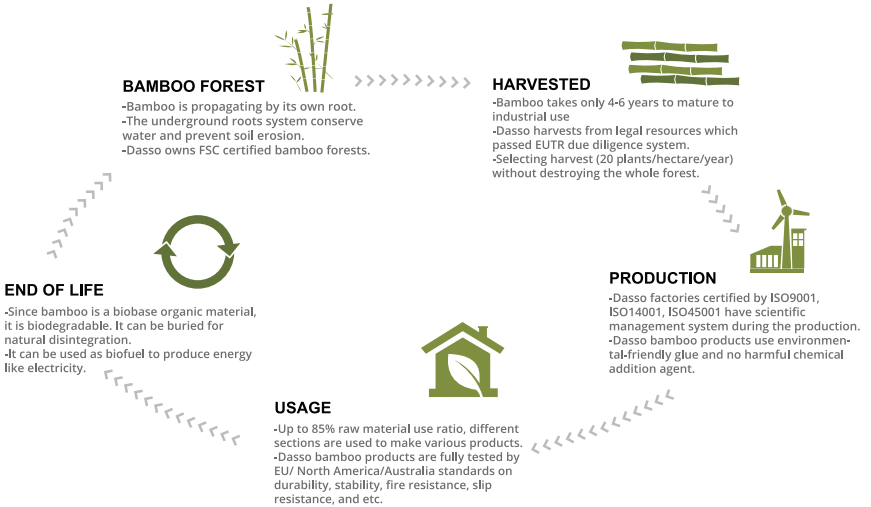


We are facing a significant global warming and rapid depletion of resources. It is our duty and responsibility to choose green and renewable resources and reduce carbon emissions.

## BAMBOO FOREST CONTRIBUTES TO GLOBAL CARBON CYCLE



## SUSTAINABLE LIFE CYCLE OF BAMBOO PRODUCTS



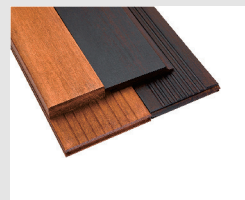
**dasso Traditional Bamboo**  
EPD No.: S-P-01925



**dasso Strand Woven Bamboo**  
EPD No.: S-P-01926



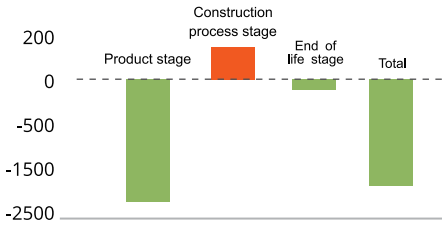
**dasso Ecosolid Bamboo**  
EPD No.: S-P-01927



**dassoXTR and dassoCTECH**  
EPD No.: S-P-01928

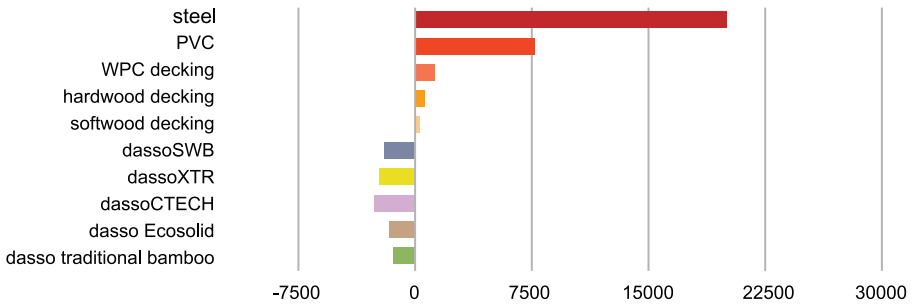
Dasso bamboo products have been EPD certified, indicated a friendly environmental impact during their entire lifespan (35-40 years).

### Carbon footprint in each life stage of bamboo products (kg CO<sub>2</sub>/M<sup>3</sup>)



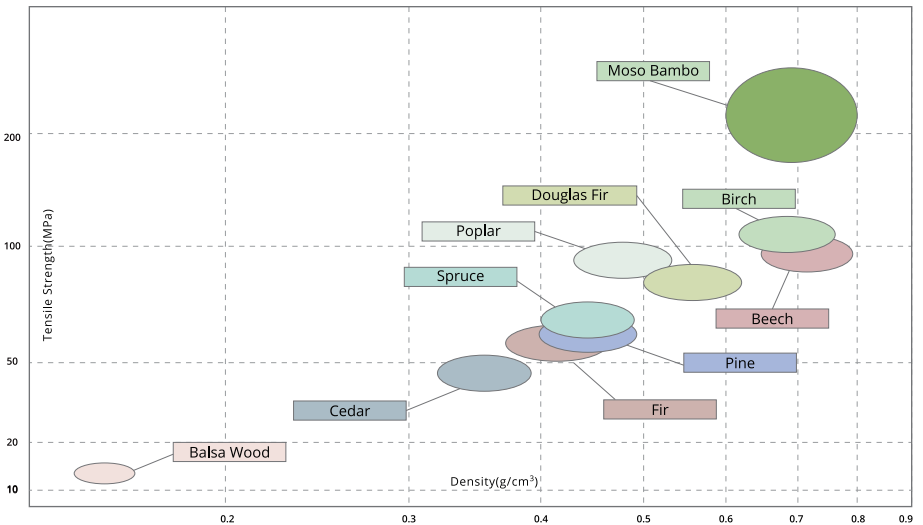
The left figure shows different stage of bamboo product contribute to the main environment impact with different shares, the total emission of CO<sub>2</sub> is negative which means "climate positive". The product stage include biological carbon sequestration and all production process.

### Carbon footprint bamboo VS other material (kg CO<sub>2</sub>/M<sup>3</sup>)



Bamboo raw materials have good mechanical properties. They can be processed and made into a variety of products with superior properties that are widely used in various applications and fields.

### Material mechanical property comparison between bamboo and wood



\*compare to other wood material, bamboo has the highest ratio of intensity/density, has the best mechanical property.

### Mechanical property comparison between dasso bamboo exterior board and other exterior wood board

items \ species	dassoXTR	dassoCTECH	IPE	Merbau	Scots Pine
Density (g/cm <sup>3</sup> )	1.15	1.2	1.1	0.815	0.55
Compressive strength (Mpa)	100	93	90	73.5	42
Janka hardness (N)	16,992	17,659	15,620	7,620	2,420
Modulus of elasticity (MOE) (MPa)	19.1	16.7	22.07	15.93	10.08

## LEED v4/v4.1 BD+C assessment criteria with relation to dasso products

Criteria LEED	dasso Traditional Bamboo	dasso Strand Woven Bamboo	dasso Ecosolid Bamboo	dassoXTR	dassoCTECH
<b>MATERIAL &amp; RESOURCES</b>	Building Life-cycle Impact reduction	●	●	●	●
	Building product disclosure and optimization-environmental product declaration	●	●	●	●
	Building product disclosure and optimization-sourcing of raw materials	●	●	●	●
	Building product disclosure and optimization-material ingredients				●
<b>INDOOR ENVIRONMENTAL QUALITY</b>	Low Emitting Materials			●	
	Acoustic performance	●	●	●	●
	Interior Lighting	Natural Color	Natural Color		
<b>INNOVATION</b>	Innovation			●	●

## BREEAM assessment criteria with relation to Dasso products

Criteria BREEAM	dasso Traditional Bamboo	dasso Strand Woven Bamboo	dasso Ecosolid Bamboo	dassoXTR	dassoCTECH
<b>Mat 01</b>	Life cycle impact-Life cycle assessment(LCA)	●	●	●	●
	Environmental product declaration	●	●	●	●
<b>Mat 03</b>	Responsible sourcing of construction products-Sustainable procurement	●	●	●	●
	Responsible sourcing of construction products -Responsible sourcing of construction products	●	●	●	●
<b>Mat 05</b>	Designing for durability and resilience			●	●
<b>Mat 06</b>	Material efficiency	●	●	●	●
<b>Hea 01</b>	Visual comfort	●	●	●	●
	Indoor air quality-Indoor air quality program			●	
<b>Hea 02</b>	Indoor air quality-Releases of building products			●	
	Indoor air quality-Measurement of indoor air quality after completion			●	
<b>Hea 04</b>	Thermal comfort			●	●
<b>Hea 05</b>	Acoustic performance	●	●	●	●
<b>Ene 04</b>	Low carbon design			●	●
<b>Inn 01</b>	Hea 02 Indoor air quality			●	
	Mat01 Life cycle impact	●	●	●	●
	Mat03 Responsible sourcing of construction products	●	●	●	●

## Green Star v3.2 assessment criteria with relation to Dasso products

Criteria Green Star	dasso Traditional Bamboo	dasso Strand Woven Bamboo	dasso Ecosolid Bamboo	dassoXTR	dassoCTECH
<b>Materials</b>	MAT-2 Building Reuse			●	●
	MAT-3 Sustainable Materials	●	●	●	●
	MAT-4 Low Emitting Material	●	●	●	●
	MAT-6 Timber	●	●	●	●
<b>Energy</b>	ENE-1 Energy			●	●
	ENE-2 Greenhouse Gas Emissions	●	●	●	●
	ENE-7 Peak Electricity Demand Reduction			●	●
<b>Indoor Environment Quality</b>	IEQ-6 Thermal Comfort			●	●
	IEQ-13 Internal Noise Levels		●		
<b>Innovation</b>	Adaptation and resilience			●	●
	Culture heritage and identity			●	●
	Financial transparency	●	●	●	●
	Material life cycle impacts	●	●	●	●
	Environmental product declarations	●	●	●	●



The mark of responsible forestry  
Ask about FSC® certified material

## Dasso Bamboo Products

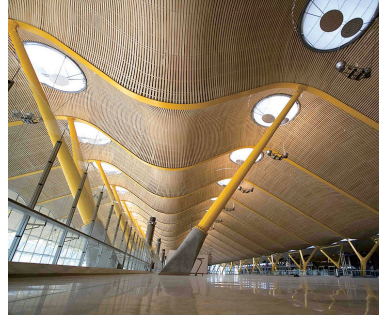
*After decades of development in bamboo industry, dasso has the advanced skills, technology (patent owner) and automatic manufacturing equipment. We have gathered talented people to develop a management system that focuses on production and quality control. This enables dasso to provide bamboo products with consistent superior quality for all kinds of applications.*



dassoFlooring



dassoFurniture



dassoElements



dassoXTR / CTECH



dassoArchitecture



dassoInnovation

## About Dasso

*Founded in 1993, Dasso is the global leader and innovator of the bamboo industry. We provide high quality bamboo products and integrated bamboo solution.*





**Hangzhou Dasuo  
Technology Co.,Ltd**



**Hangzhou Zhuangyi  
Furniture Co.,Ltd**



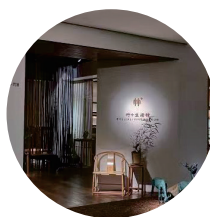
**Fujian Dasso Industry  
Co., Ltd**



**Zhejiang Daocheng Bamboo  
Industry Co., Ltd**



**Jiangxi Zhushang Bamboo  
Industrial Co.,Ltd**



**Zhujia Gallery**



**Zhejiang Xinhaiye Bamboo  
Technology Co.,Ltd**



**Shunchang Zhujia Bamboo  
Industrial Co.,Ltd**



**dasso sustainable  
bamboo forest**



**dasso China**

Add: Tongyi Village, Linpu, Xiaoshan, Hangzhou, China 311251

Tel: 86.0571.5716.3765

Fax: 86.0571.5716.3700

Email: info@dassoGroup.com

Web: www.dassoGroup.com



**www.dasso.co.nz**  
**09 274 6825**

